

St Thomas of Aquin's RC High School – September 2022 Insight analysis

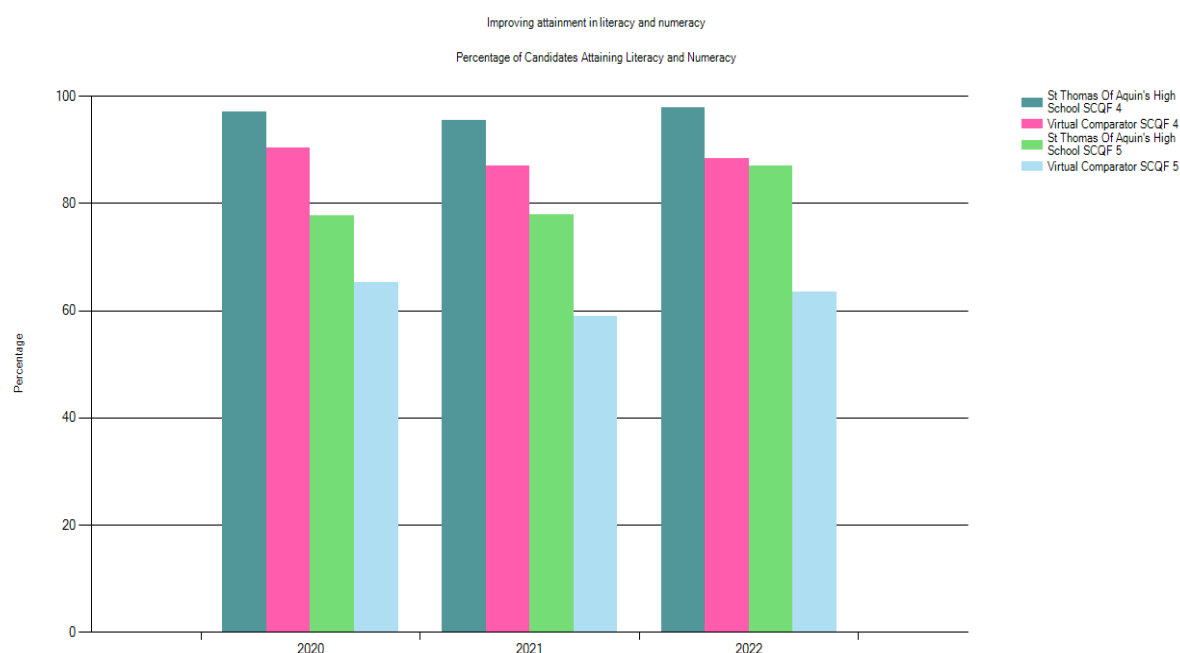
Insight is used to help secondary schools and local authorities identify areas of success and where improvements can be made for pupils in the senior phase (S4 - S6). Its key focus is on detailed information about pupil attainment and the destinations of school leavers. Much of the attainment information is based on pupils' best awards in each subject. Insight does not include data relating to attainment in S1 - S3. Although Insight provides data on the attainment of a wide range of Scottish Credit and Qualifications Framework (SCQF) awards from a range of providers, not all SCQF achievement awards are included. Find [further information on Insight](#) on the Scottish Government website.

The virtual comparator (VC) consists of a sample group of school leavers from schools in other local authorities who have similar characteristics to the school leavers from the school in question. For each school leaver, ten matching school leavers are randomly selected based on gender, additional support needs, stage of leaving school (S4, S5 or S6) and the social context in which they live ([Scottish Index of Multiple Deprivation](#)). These characteristics were selected due to their significance in explaining differences in the attainment and destinations of school leavers in Scotland.

Please find a detailed account of tariff points - [Tariff Note \(scotxed.net\)](#)

Literacy and Numeracy

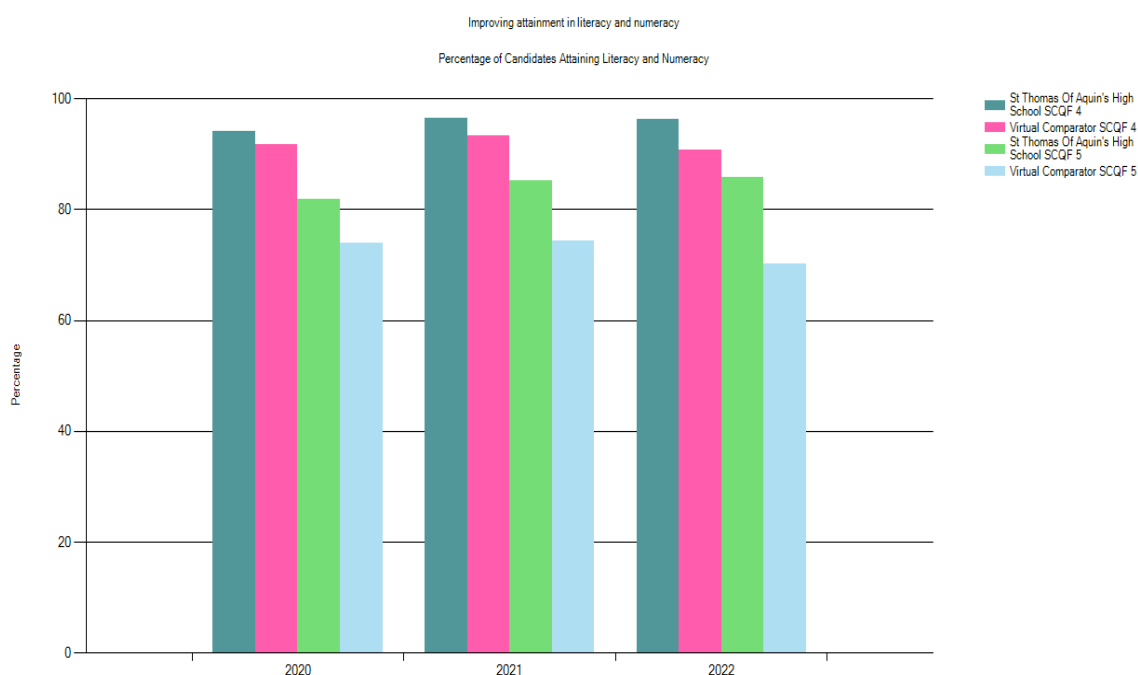
Performance of S4 candidates in Literacy and Numeracy based on S4 cohort numbers



2022 S4 Level 4 in Literacy and Numeracy is at **97.83%** which improves from the 2021 statistic of 95.59%. St Thomas of Aquin's Level Literacy and Numeracy combines statistic is **9.41% above the Virtual Comparator**.

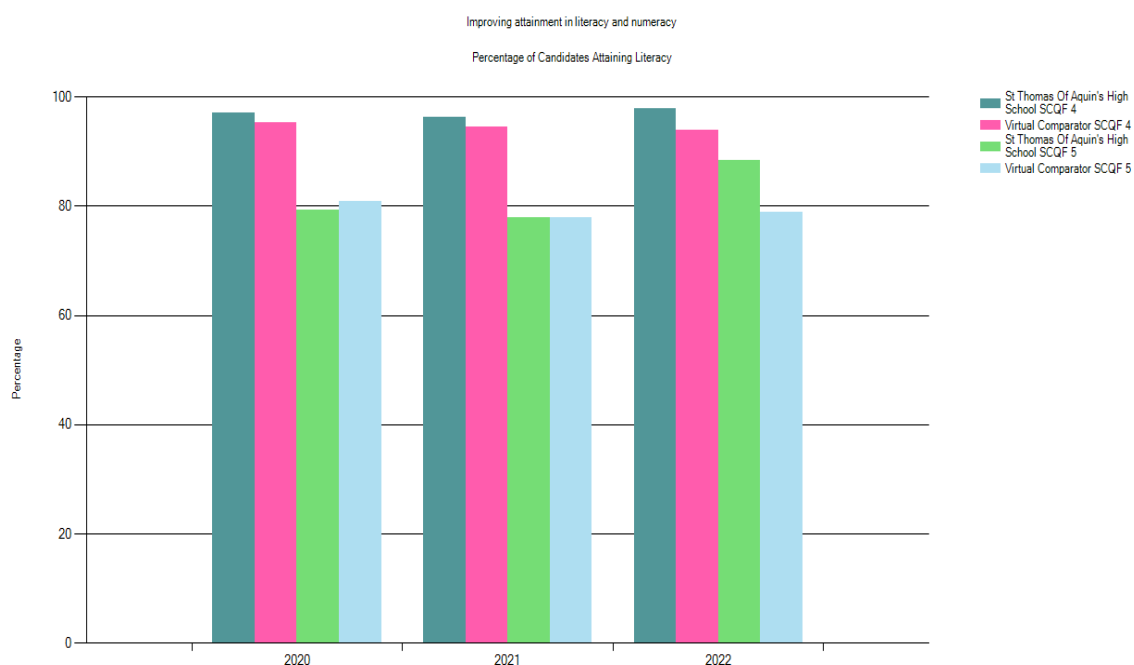
2022 S4 Level 5 in Literacy and Numeracy is at **86.69%** which improves from the 2021 statistic of 77.94%. St Thomas of Aquin's Level Literacy and Numeracy combines statistic is **23.48% above the Virtual Comparator**.

Performance of S5 candidates in Literacy and Numeracy based on S4 cohort numbers



2022 S5 Level 4 in Literacy and Numeracy stands at **96.3%** and S5 Level 5 in Literacy and Numeracy stands at **85.93**. The Level 4 statistic is 5% above the VC and the Level 5 statistic is over 15% above the VC.

Performance of S4 candidates attaining Level 4 and Level 5 Literacy



2022 S4 Level 4 in Literacy is at **97.83%** which improves from last year's statistic of 96.32%. The 2022 S4 Level 5 in Literacy stands at **88.41%** which is an increase of 10% from the school's stats last year. Both Levels outperform the VC.

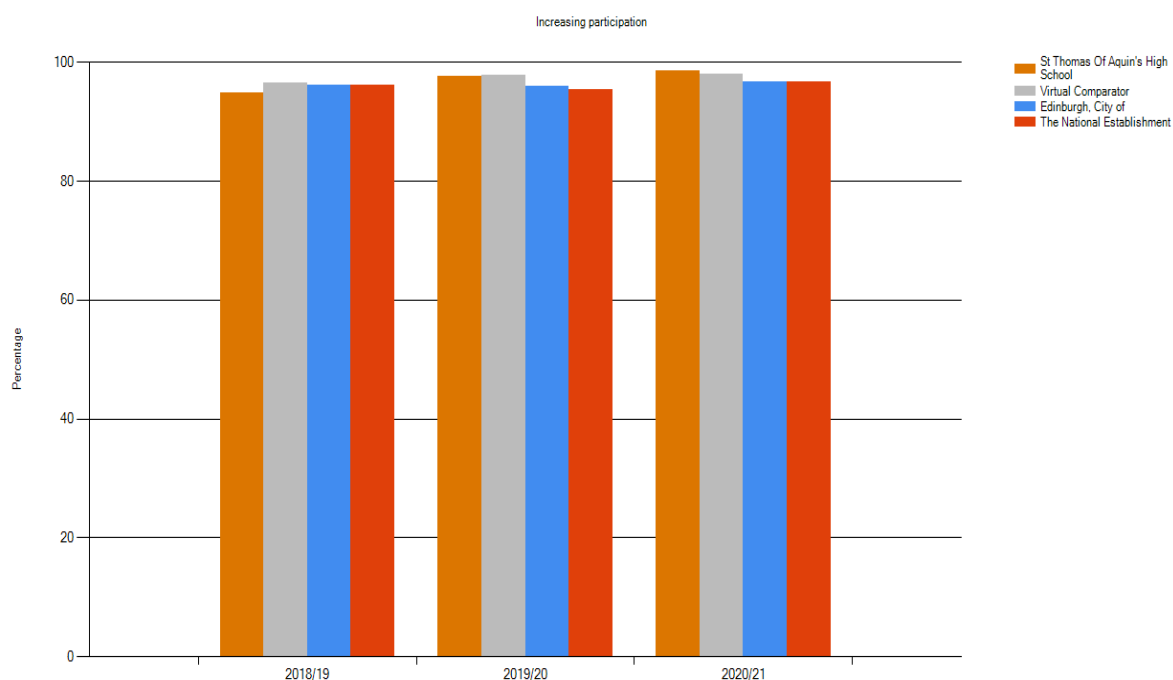
Performance of S4 candidates attaining Level 4 and Level 5 Numeracy



2022 S4 Level 4 in Numeracy stands at **99.28%** which improves from last year's statistic of 98.53%. The 2022 S4 Level 5 in Numeracy stands at **92.03%**. Both Levels outperform the VC, and the Level 5 statistic outperforms the VC by over 20%.

Positive Destinations

Percentage of St Thomas of Aquin's pupils moving into a positive destination (2021 February stats)



St Thomas of Aquin's positive destinations statistic stands at **98.47%** for February 2021. Only one pupil (Leaver) did not achieve a positive destination at the school.

Breadth and Depth: Leavers

[View Options](#)
[Change Options](#)

The selected year is 2021
[Show/Hide Tabular Data](#)
[Download Data](#)

Awards	Level 1	Level 2	Level 3	Level 4	Level 5	Level 6	Level 7	Number in Cohort
1 or more	126	126	126	126	115	106	61	126
2 or more	125	125	125	123	113	100	38	126
3 or more	125	125	125	122	110	93	23	126
4 or more	119	119	119	116	104	87	2	126
5 or more	118	118	118	114	99	82	0	126

The above table helps us understand the breadth and depth of National Qualifications St Thomas pupils are leaving the school with. When the **126 S4-S6 Leavers** left in June 2022:

118 pupils left with 5 National 3 qualifications = **94%**

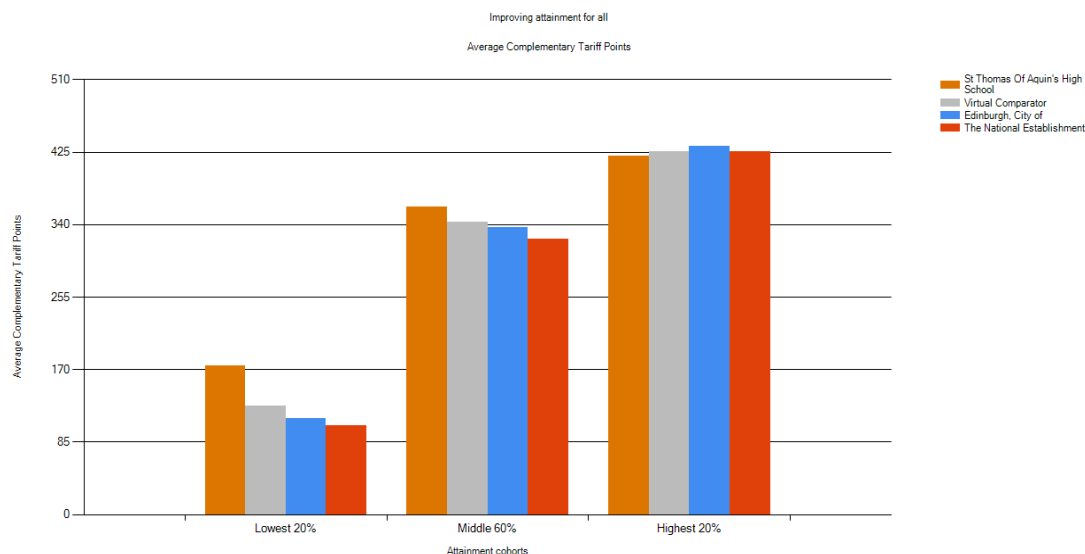
114 pupils left with 5 National 4 qualifications = **90%**

99 pupils left with 5 National 5 qualifications = **79%**

82 pupils left with 5 National 6 (Highers) qualifications = **65%**

Improving attainment for all

S4 average complementary tariff points based on S4 cohort numbers

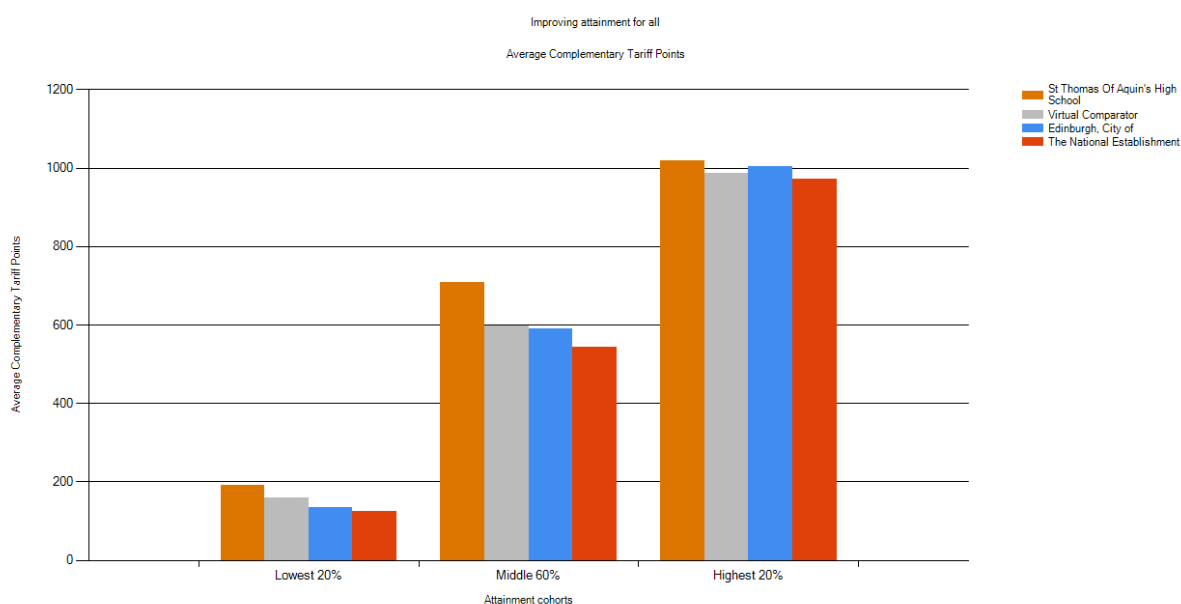


The average complementary tariff points measurement allows secondary schools to compare pupil attainment by taking a pupil's 5 "best" National Qualification subject attainment levels (combining the tariff points for subject Levels and Grades) and compare this with other pupils in different schools within a Local Authority and outwith. In different Local Authorities and schools, pupils can sit 6, 7, or 8 National Qualifications. In St Thomas, a S4 pupil sits 7 National Qualifications.

The S4 graph shows that in the lowest 20% and middle 60% attainment measurements, St Thomas' outperforms the VC, City of Edinburgh, and the National Establishment attainment. In the highest 20% of attainment measurement, St Thomas is outperformed by 5 points (VC), 12 points (CEC), and 6 points (NE). Although this is not a significant concern, it is an area the school should and will analyse further. To support your understanding of Tariff points - 1 C Grade at National 5 has 64 tariff score points.

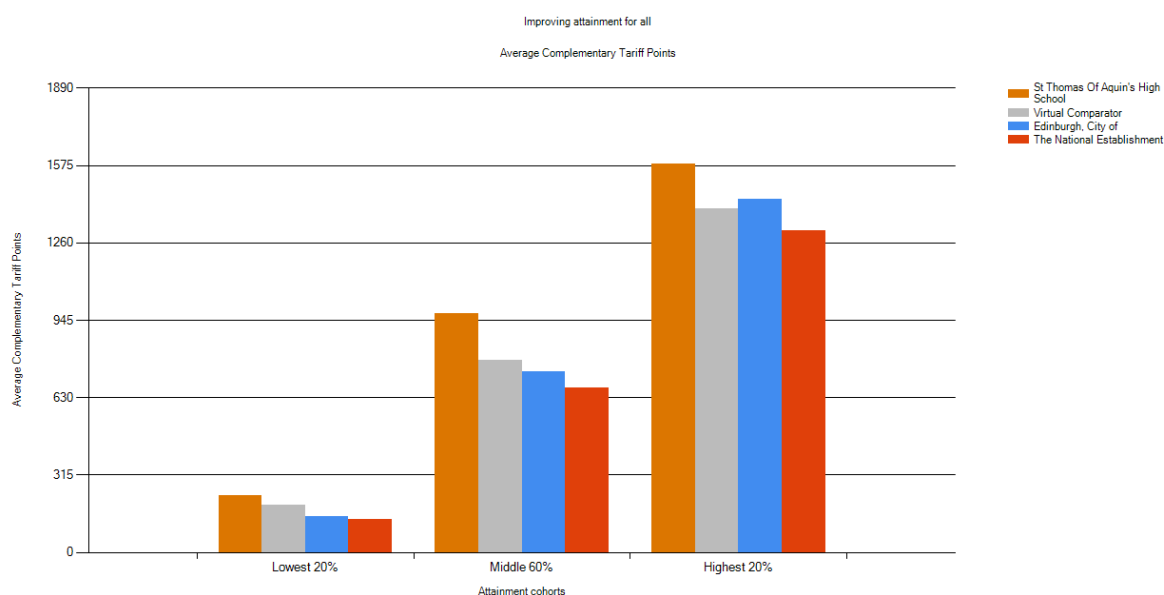
The average complementary tariff points score for the S4 middle 60% is 360, which means that on average pupils in this measurement are achieving approximately 5 National 5 Bs. In the highest 20%, the average complementary tariff score is 420 which means that on average pupils in this measurement are achieving a blend of 5 National 5 As.

S5 average complementary tariff points based on S4 cohort numbers



The **S5** average complementary tariff points graph continues to compare S5 pupils 5 best National Qualifications (although we are using cohort numbers from S4). The above graph shows that in all 3 measures, the lowest 20%, the middle 60%, and highest 20% attainment measures St Thomas' outperforms the VC, City of Edinburgh, and the National Establishment results. The difference between the average complementary tariff points of St Thomas of Aquin's middle 60% (708) and the City of Edinburgh schools middle 60% (591) is 117 To support your understanding of this, an A at Higher is the equivalent of 204 tariff points, a C at Higher is the equivalent of 160 tariff points. The St Thomas of Aquin's middle 60% average complementary tariff points of 708 means that on average pupils in this measurement are achieving approximately 4 Highers at B grade and that the St Thomas of Aquin's highest 20% average complementary tariff points of 1018 pupils are achieving 5 Highers at A grade.

S6 average complementary tariff points based on S4 cohort numbers



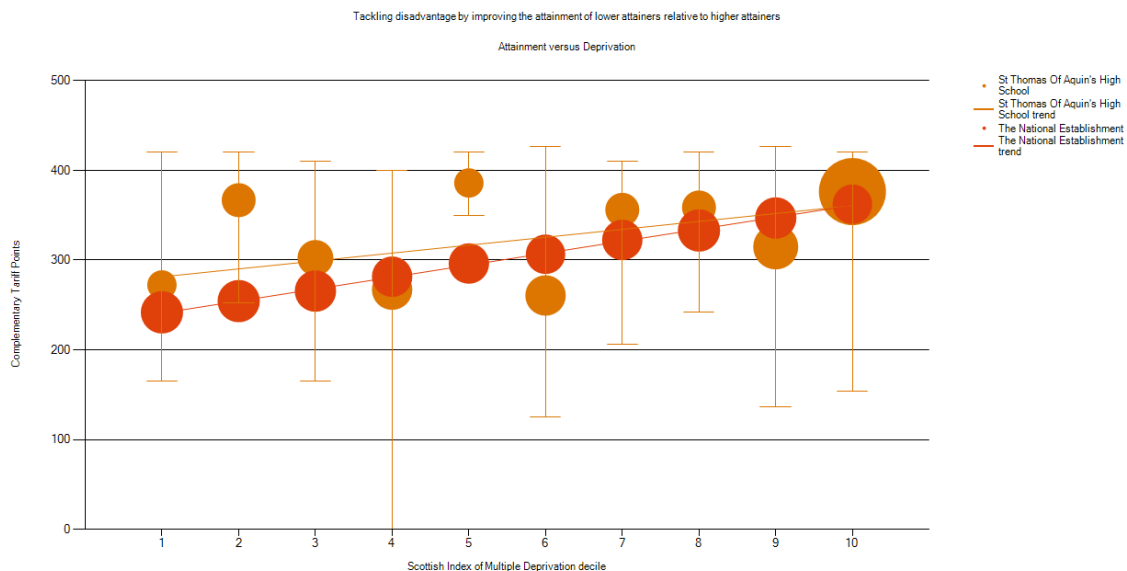
The **S6** average complementary tariff points graph shows that in all 3 measures, the lowest 20%, the middle 60%, and highest 20% attainment measures St Thomas' outperforms the VC, City of Edinburgh, and the National results. If you look at the middle 60% of S6 pupils, the average complementary tariff points are 973 compared to the VC of 780, and the National Establishment measurement of 668. To support your understanding of this, a C at Advanced Higher is the equivalent of 400 tariff points, an A at Higher is the equivalent of 204 tariff points.

Attainment versus Deprivation

The Scottish index of multiple deprivation (SIMD) is a relative measure of deprivation across 6,976 small areas (called data zones). If an area is identified as 'deprived', this can relate to people having a low income, but it can also mean fewer resources or opportunities. SIMD looks at the extent to which an area is deprived across seven domains: income, employment, education, health, access to services, crime and housing. It can help improve understanding about the outcomes and circumstances of people living in the most deprived areas in Scotland. It can also allow effective targeting of policies and funding where the aim is to wholly or partly tackle or take account of area concentrations of multiple deprivation. SIMD is an area-based measure of relative deprivation: not every person in a highly deprived area will themselves be experiencing high levels of deprivation.

When comparing pupils in a specific SIMD measurement to that of the National Establishment average, pupils complementary tariff points are considered.

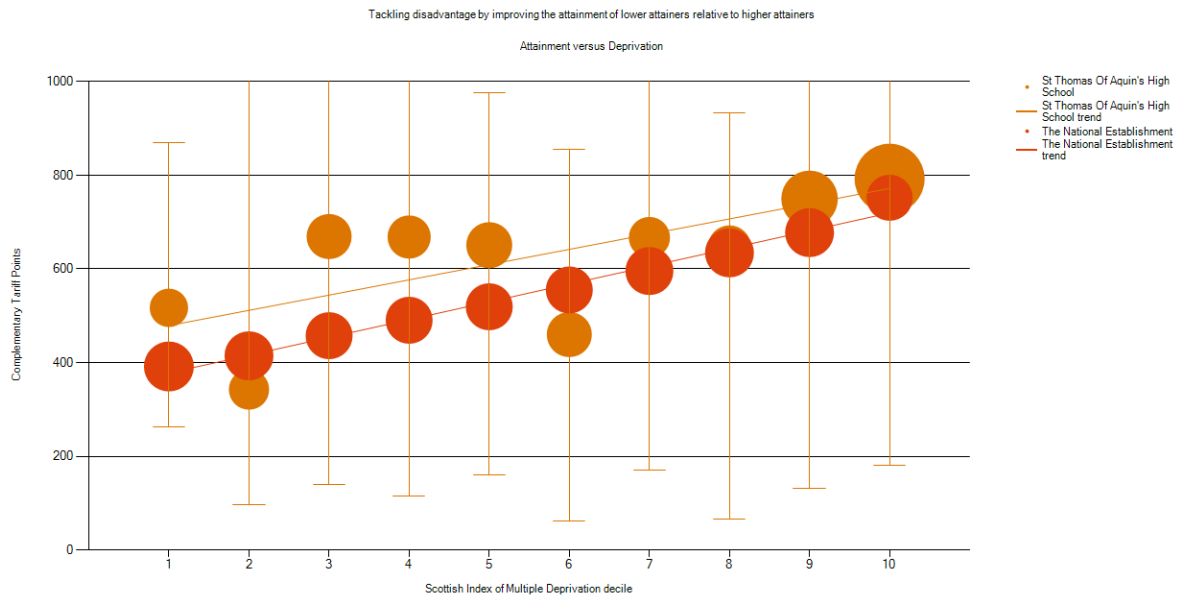
S4 candidates based on S4 cohort numbers



The above S4 graph compares St Thomas of Aquin's (**orange**) complementary tariff points to the National establishment tariff points (**red**). The St Thomas of Aquins attainment gap of pupils in **SIMD 1 (272)** to that of **SIMD 10 (376)** is a gap of **104**. The National establishment attainment gap between SIMD 1 to 10 of **120**. The gradient of the lines show that St Thomas is closing the attainment gap compared to the National Establishment averages.

In SIMD **1,2,3,5,7,8, and 10** St Thomas outperforms the National establishment averages in those specific metrics, with SIMD 4 on par and SIMD 6 (13 pupils) & 9 (18 pupils) are SIMD measurements below the National establishment averages.

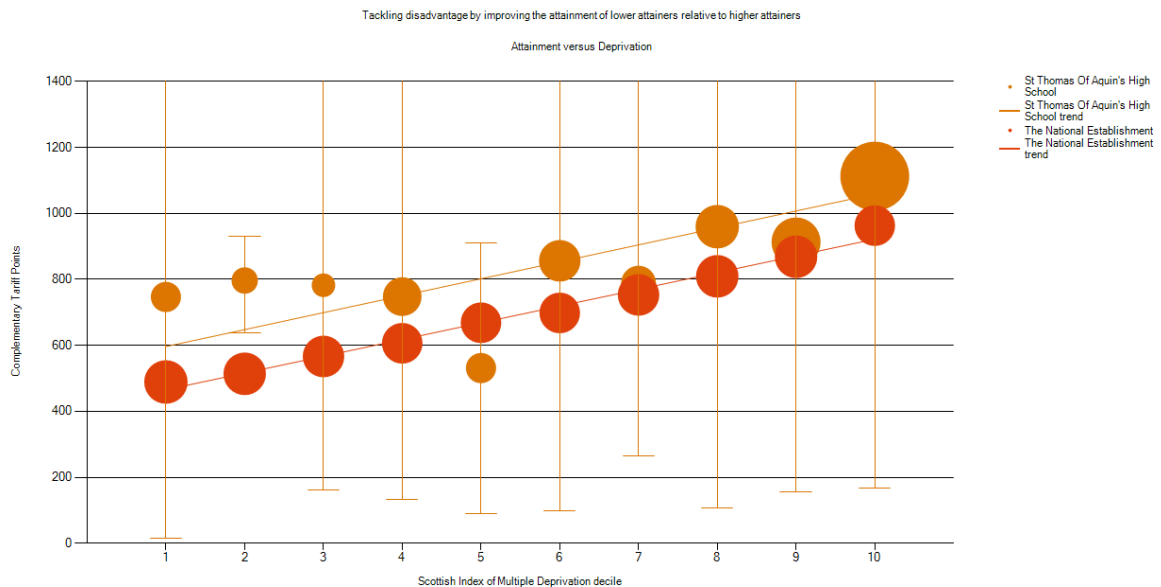
S5 candidates based on S4 cohort numbers



St Thomas of Aquin's complementary tariff attainment gap in S5 pupils in **SIMD 1 (517)** to that of **SIMD 10 (793)** is a gap of **276** which can be compared to the National Establishment gap between SIMD 1 to 10 of **360**. The gradient of the lines show that St Thomas is slightly closing the attainment gap compared to the National Establishment averages.

In SIMD **1,3,4,5, 7,8, 9, and 10** St Thomas outperforms the National Establishment averages in those specific metrics, with SIMD 2 (8 pupils) and SIMD 6 (11 pupils) are the only measurement below the National Establishment average.

S6 candidates based on S4 cohort numbers



The attainment gap of S6 St Thomas of Aquin's pupils in **SIMD 1 (747)** to that of **SIMD 10 (1113)** at St Thomas of Aquin's is a gap of **366** compared to the National Establishment gap between SIMD 1 to 10 of **474**. The gradient of the lines show that St Thomas is slightly closing the attainment gap compared to the National establishment averages.

In SIMD **1,2, 3, 4, 6,7, 8, 9 and 10** St Thomas outperforms the National Establishment averages in those specific metrics, with SIMD 5 (5 pupils), the only measurement below the National Establishment average.